

toimg TOIMANZ

Understanding your needs & provide your satisfaction is our priorities.



Page	Description
02	Native Series
04	Stylish Series
06	Bejewel Series
08	Hanami Series
10	Mounting Design
12	Deur 01 Series
14	Deur 02 Series
16	Deur 03 Series
18	About Toimanz
20	Radiant Design
22	Elegant Design
24	Customize Design
26	Junior Design
28	Toimanz Locker
30	Phenolic Wall Cladding
31	Laboratories
32	Privacy Panel
33	Beyond
34	In House Accessories
35	Alternative Accessories
36	Company Info

INDEX

YAN
019 338 9171
017 288 9407
yanyan@toimanz.com.my



Native Series are express cubicle made to the client's specific requirements.

Dimensions shown below are therefore provided for guidance only.

OVERALL DIMENSIONS

CUBICLE HEIGHT	2000mm
CUBICLE WIDTH	800 - 1000mm
GROUND CLEARANCE	150mm

COMPONENT DIMENSIONS

PARTITION HEIGHT	1830mm
PARTITION DEPTH	900 - 1800mm
PARTITION THICKNESS	10, 12, 13, 18mm
PILASTER HEIGHT	1830mm
PILASTER THICKNESS	10, 12, 13, 18mm
DOOR HEIGHT	1830mm
DOOR WIDTH	600mm
DOOR THICKNESS	10, 12, 13, 18mm

ACCESSORIES

NYLON

OPTIONS

- Full Height (floor to ceiling cubicle)
- Variable overall height and floor clearance
- Varies of colors selection in one cubicle

*NOTE

Items can be supplied nationally on a supply only or supply and install basis. Installation is carried out by our fully qualified installation team.



Specification

To supply and install Toimanz Toilet Cubicle System Model "Native Series" consist of high pressure laminate phenolic compact board with melamine resin impregnated decorative paper on both sides, nylon accessories, heavy duty aluminium (BK) and all necessary fitting are in accordance with manufacturer's details.

Available Thickness: 10mm, 12mm, 13mm & 18mm

Accessories & Fittings

TN101, TN102, TN103, TN104, TN106 and Top Rail (BK), U-Channel (BK)

* Dimensions of 1800mm Depth, overall 2000mm height included 150mm floor clearance is recommended for wastage reduction on material.



TN101

NYLON ADJUSTABLE LEG



TN102

NYLON GRAVITY HINGE



TN103

NYLON DOOR KNOB



TN104

NYLON TUMBTURN LOCK INDICATOR



TN106

NYLON LATCH HOOK



Stylish Series are express cubicle made to the client's specific requirements.

Dimensions shown below are therefore provided for guidance only.

OVERALL DIMENSIONS

CUBICLE HEIGHT	2000mm
CUBICLE WIDTH	800 - 1000mm
GROUND CLEARANCE	150mm

COMPONENT DIMENSIONS

PARTITION HEIGHT	1830mm
PARTITION DEPTH	900 - 1800mm
PARTITION THICKNESS	10, 12, 13, 18mm

PILASTER HEIGHT	1830mm
PILASTER THICKNESS	10, 12, 13, 18mm

DOOR HEIGHT	1830mm
DOOR WIDTH	600mm
DOOR THICKNESS	10, 12, 13, 18mm

ACCESSORIES

STAINLESS STEEL

OPTIONS

- Full Height (floor to ceiling cubicle)
- Variable overall height and floor clearance
- Varies of colors selection in one cubicle

*NOTE

Items can be supplied nationally on a supply only or supply and install basis. Installation is carried out by our fully qualified installation team.



Specification

To supply and install Toimanz Toilet Cubicle System Model "Stylish Series" consist of high pressure laminate phenolic compact board with melamine resin impregnated decorative paper on both sides, stainless steel accessories, heavy duty aluminium (NA) and all necessary fitting are in accordance with manufacturer's details.

Available Thickness: 10mm, 12mm, 13mm & 18mm

Accessories & Fittings

TS102, TS103, TS106, TS107, TST31A and Top Rail (NA), U-Channel (NA)

* Dimensions of 1800mm Depth, overall 2000mm height included 150mm floor clearance is recommended for wastage reduction on material.



Bejewel Series are express cubicle made to the client's specific requirements.

Dimensions shown below are therefore provided for guidance only.

OVERALL DIMENSIONS

CUBICLE HEIGHT	2000mm
CUBICLE WIDTH	800 - 1000mm
GROUND CLEARANCE	150mm

COMPONENT DIMENSIONS

PARTITION HEIGHT	1830mm
PARTITION DEPTH	900 - 1800mm
PARTITION THICKNESS	10, 12, 13, 18mm
PILASTER HEIGHT	1830mm
PILASTER THICKNESS	10, 12, 13, 18mm
DOOR HEIGHT	1830mm
DOOR WIDTH	600mm
DOOR THICKNESS	10, 12, 13, 18mm

ACCESSORIES

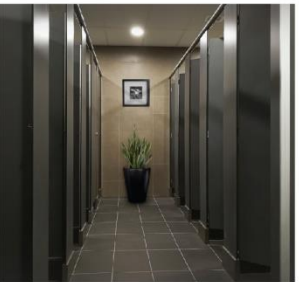
STAINLESS STEEL / STAINLESS STEEL SHOE PLATE

OPTIONS

- Full Height (floor to ceiling cubicle)
- Variable overall height and floor clearance
- Varies of colors selection in one cubicle

***NOTE**

Items can be supplied nationally on a supply only or supply and install basis. Installation is carried out by our fully qualified installation team.



Specification

To supply and install Toimanz Toilet Cubicle System Model "Bejewel Series" consist of high pressure laminate phenolic compact board with melamine resin impregnated decorative paper on both sides, stainless steel accessories, stainless steel shoe plate on front pilaster panel and heavy duty aluminum (NA) and all necessary fitting are in accordance with manufacturer's details.

Available Thickness: 10mm, 12mm, 13mm & 18mm

Accessories & Fittings

TS102, TS106, TS107, TS109, TST31A and Top Rail (NA), U-Channel (NA)

* Dimensions of 1800mm Depth, overall 2000mm height included 100mm floor clearance is recommended for wastage reduction on material.





Hanami Series are express cubicle made to the client's specific requirements.

Dimensions shown below are therefore provided for guidance only.

OVERALL DIMENSIONS

CUBICLE HEIGHT	2400mm
CUBICLE WIDTH	800 - 1000mm
GROUND CLEARANCE	150mm

COMPONENT DIMENSIONS

PARTITION HEIGHT	1830mm
PARTITION DEPTH	900 - 1800mm
PARTITION THICKNESS	12, 13, 18mm
PILASTER HEIGHT	1830mm
PILASTER THICKNESS	12, 13, 18mm
DOOR HEIGHT	1830mm
DOOR WIDTH	600mm
DOOR THICKNESS	12, 13, 18mm

ACCESSORIES

STAINLESS STEEL

OPTIONS

- Full Height (floor to ceiling cubicle)
- Variable overall height and floor clearance
- Varies of colors selection in one cubicle

***NOTE**

Items can be supplied nationally on a supply only or supply and install basis. Installation is carried out by our fully qualified installation team.



Specification

To supply and install Toimanz Toilet Cubicle System Model "Hanami Series" consist of high pressure laminate phenolic compact board with melamine resin impregnated decorative paper on both sides, stainless steel accessories, metal C-channel and all necessary fitting are in accordance with manufacturer's details.

Available Thickness: 10mm, 12mm, 13mm & 18mm

Accessories & Fittings

TS102, TS104, TST31A, TS106, TS107 and Metal Steel 'C'

* Dimensions of 1800mm Depth, overall 2400mm -3000mm height included 150mm floor clearance is recommended for wastage reduction on material.





Mounting Design are express cubicle made to the client's specific requirements

Dimensions shown below are therefore provided for guidance only.

OVERALL DIMENSIONS

CUBICLE HEIGHT	2400mm - 3000mm
CUBICLE WIDTH	800mm - 1000mm
GROUND CLEARANCE	150mm

COMPONENT DIMENSIONS

PARTITION HEIGHT	1830mm - 3000mm
PARTITION THICKNESS	10mm, 12mm, 13mm & 18mm

DOOR HEIGHT	1200mm
DOOR WIDTH	600mm
DOOR THICKNESS	10mm, 12mm, 13mm & 18mm

ACCESSORIES

STAINLESS STEEL

OPTIONS

- Pilaster to cover Shoebox
- Variable overall height and floor clearance
- Varies of colors selection in one cubicle

*NOTE

Items can be supplied nationally on a supply only or supply and install basis. Installation is carried out by our fully qualified installation team.



Specification

To supply and install Toimanz Toilet Cubicle System Model "MOUNTING" consist of high pressure laminate phenolic compact board with melamine resin impregnated decorative paper on both sides, stainless steel accessories, stainless steel shoe box on front pilaster panel and heavy duty aluminum (N/A) and all necessary fitting are in accordance with manufacturer's details.

Available Thickness: 10mm, 12mm ,13mm & 18mm

Accessories & Fittings

TS101, TS106, TS107, TS109, TST31A, and Metal Steel 'C'

* Dimensions of 1800mm Depth, overall 2400mm -3000mm height
Included 150mm floor clearance is recommended for wastage reduction on material.





Deur 01 Series are express cubicle made to the client's specific requirements.

Dimensions shown below are therefore provided for guidance only.

OVERALL DIMENSIONS

CUBICLE HEIGHT	2000mm
CUBICLE WIDTH	650mm
GROUND CLEARANCE	150mm

COMPONENT DIMENSIONS

DOOR HEIGHT	1830mm
DOOR WIDTH	600mm
DOOR THICKNESS	10, 12, 13, 18mm

ACCESSORIES

NYLON / STAINLESS STEEL

OPTIONS

- The following options are available at supplementary cost:
- Full Height (floor to ceiling cubicle)
- Variable overall height and floor clearance
- Varies of colors selection in one cubicle

***NOTE**

Items can be supplied nationally on a supply only or supply and install basis. Installation is carried out by our fully qualified installation team.



Specification

To supply and install Toimanz Toilet Cubicle System Model "Deur 01" consist of high pressure laminate phenolic compact board with melamine resin impregnated decorative paper on both sides nylon, stainless steel accessories, aluminium door frame (BK) and all necessary fitting are in accordance with manufacturer's details.

Available Thickness: 10mm, 12mm, 13mm & 18mm

Accessories & Fittings

TN102, TN103, TN105, TN106 and Aluminum Door Frame



Deur 02 Series are express cubicle made to the client's specific requirements.

Dimensions shown below are therefore provided for guidance only.

OVERALL DIMENSIONS

CUBICLE HEIGHT	2000mm
CUBICLE WIDTH	800mm - 1000mm
GROUND CLEARANCE	150mm

COMPONENT DIMENSIONS

PARTITION HEIGHT	1830mm
PARTITION THICKNESS	10, 12, 13, 18mm
DOOR HEIGHT	1830mm
DOOR WIDTH	600mm
DOOR THICKNESS	10, 12, 13, 18mm

ACCESSORIES

NYLON / STAINLESS STEEL

OPTIONS

- Full Height (floor to ceiling cubicle)
- Variable overall height and floor clearance
- Varies of colors selection in one cubicle

***NOTE**

Items can be supplied nationally on a supply only or supply and install basis. Installation is carried out by our fully qualified installation team.



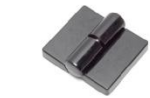
Specification

To supply and install Toimanz Toilet Cubicle System Model "Deur 02" consist of high pressure laminate phenolic compact board with melamine resin impregnated decorative paper on both sides , nylon/stainless steel accessories, heavy duty aluminium (BK) and all necessary fitting are in accordance with manufacturer's details.

Available Thickness: 10mm, 12mm, 13mm & 18mm

Accessories & Fittings

TN102, TN103, TN104, TN105, and Top Rail (BK), U-Channel (BK)



TN102
NYLON GRAVITY HINGE



TN103
NYLON DOOR KNOB



TN104
NYLON TUMBTURN LOCK INDICATOR



TN105
NYLON COAT HOOK



DEUR 03
SERIES



TS102
SS WHITE COAT HOOK



TS104
SS INDICATOR LATCH



TS107
SS TUMBLER LOCK
INDICATOR



TST31A
SS HINGES

Deur 03 Series are express cubicle made to the client's specific requirements.

Dimensions shown below are therefore provided for guidance only.

OVERALL DIMENSIONS

CUBICLE HEIGHT	2000mm
CUBICLE WIDTH	900mm - 1200mm
GROUND CLEARANCE	150mm

COMPONENT DIMENSIONS

PARTITION HEIGHT	1830mm
PARTITION THICKNESS	10, 12, 13, 18mm
DOOR HEIGHT	1830mm
DOOR WIDTH	600mm
DOOR THICKNESS	10, 12, 13, 18mm

ACCESSORIES

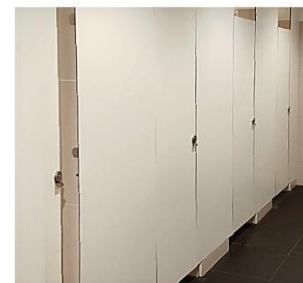
NYLON / STAINLESS STEEL

OPTIONS

- Full Height (floor to ceiling cubicle)
- Variable overall height and floor clearance
- Varies of colors selection in one cubicle

***NOTE**

Items can be supplied nationally on a supply only or supply and install basis. Installation is carried out by our fully qualified installation team.



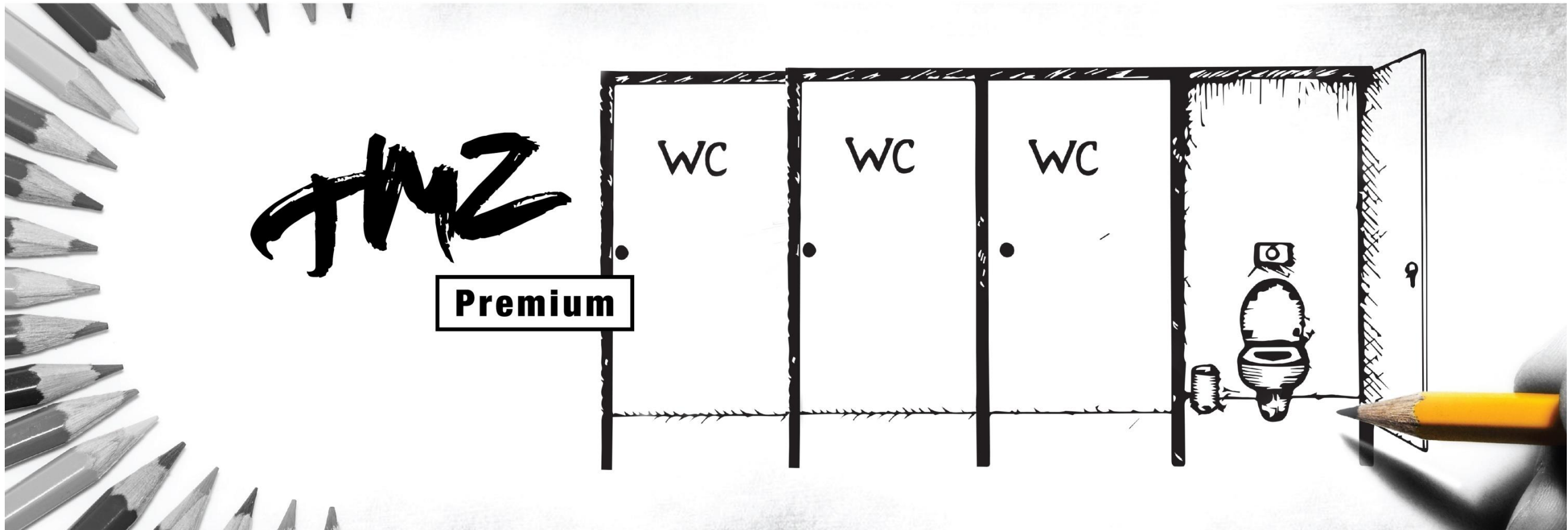
Specification

To supply and install Toimanz Toilet Cubicle System Model "Deur 03" consist of high pressure laminate phenolic compact board with melamine resin impregnated decorative paper on both sides, stainless steel/nylon accessories, and all necessary fitting are in accordance with manufacturer's details.

Available Thickness: 10mm, 12mm, 13mm & 18mm

Accessories & Fittings

TS102, TS104, TS107, TST31A, and Top Rail (BK), U-Channel (BK)



Impress with us,
with some **Great Facts.**

Toimanz Sdn Bhd, one of the leading toilet cubicle contractor in design, supply and install of toilet cubicle system in Malaysia. Specialist in providing toilet cubicle, changing room, shower cubicle as well as a wide range of custom toilet cubicle system. Combination of avant-garde designs and high quality materials have uplifted our brand as the best toilet cubicle contractor in Malaysia.

Our well-developed team of professionals have bring forward high durability, long lasting, wear and water resistant of toilet cubicle system to fulfill your satisfaction. We have come out with the latest inventions of colours and designs that will give comfort and practicality for each consumers.

We produce affordable solutions for each of our customers with the usage of finest phenolic compact laminate products and able to withstand different types of environment. Clients as our top priorities, we always believe in punctuality and efficiency in delivering our top quality and hardwork of excellent toilet cubicle system for you.

We understand/know washroom solutions.



RADIANT

RADIANT DESIGN



TS101
CYLINDER COAT HOOK

TS103
RADIANT TURN LOCK INDICATOR

TST31A
SS HINGES

Radiant Design are premium cubicle made to the client's specific requirements.

Dimensions shown below are therefore provided for guidance only.

OVERALL DIMENSIONS

CUBICLE HEIGHT	2700mm - 3000mm
CUBICLE WIDTH	1000 - 1400mm
GROUND CLEARANCE	50 - 150mm only
PILASTER HEIGHT	3000mm
PILASTER WIDTH (STAINLESS STEEL)	Fix to position of toilet cubicle stainless steel frame compile of uprights side frame in 304 stainless steel hairline frame
DOOR HEIGHT	2250mm
DOOR WIDTH	750mm
DOOR THICKNESS	12, 13, 18mm

ACCESSORIES

STAINLESS STEEL

OPTIONS

- Full Height (floor to ceiling cubicle)
- Variable overall height and floor clearance
- Varies of colors selection in one cubicle

*NOTE

Items can be supplied nationally on a supply only or supply and install basis. Installation is carried out by our fully qualified installation team.



Specification

To supply and install Toimanz toilet cubicle "Premium Radiant" consists of high pressure laminate phenolic compact board with melamine resin impregnated decorative paper on both sides, fix to position of toilet cubicle stainless steel frame comprises of upright side frame in 304 stainless steel hairline finish,color coated glass fix on plywood backing and all necessary fitting are in accordance with manufacturer's details.

Available thickness: 12mm, 13mm & 18mm

Accessories & Fittings

TS101, TS103, TST31A and stainless steel hair line frame

* Dimensions of 1800mm Depth, overall 3000mm height included 150mm floor clearance is recommended for wastage reduction on material.



Elegant Design are premium cubicle made to the client's specific requirements.

Dimensions shown below are therefore provided for guidance only.

OVERALL DIMENSIONS

CUBICLE HEIGHT	2700mm - 3000mm
CUBICLE WIDTH	750 - 1000mm
GROUND CLEARANCE	50 - 150mm only

COMPONENT DIMENSIONS

PARTITION HEIGHT	2700mm - 3000mm
PARTITION DEPTH	900 - 1800mm
PARTITION THICKNESS	12, 13, 18mm

PILASTER HEIGHT	1830mm
PILASTER THICKNESS	12, 13, 18mm

DOOR HEIGHT	1830mm
DOOR WIDTH	600mm
DOOR THICKNESS	12, 13, 18mm
FIX PANEL	900mm - 1200mm

ACCESSORIES

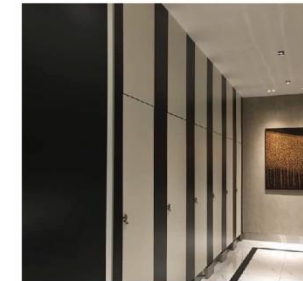
STAINLESS STEEL

OPTIONS

- Full Height (floor to ceiling cubicle)
- Variable overall height and floor clearance
- Varies of colors selection in one cubicle

*NOTE

Items can be supplied nationally on a supply only or supply and install basis. Installation is carried out by our fully qualified installation team.



Specification

To supply and install Toimanz toilet cubicle "Premium Elegant" consists of high pressure laminate phenolic compact board with melamine resin impregnated decorative paper on both sides, fix panel as full height, stainless steel accessories, stainless steel shoe box and all necessary fitting are in accordance with manufacturer's details.

Available thickness: 12mm, 13mm & 18mm

Accessories & Fittings

TS102, TS106, TS107, TS109, TST31A

* Dimensions of 1800mm Depth, overall 3000mm height included 100mm floor clearance is recommended for wastage reduction on material.





TS102
SS WHITE COAT HOOK



TS104
SS INDICATOR LATCH



TS109
SS SHOEBOX



TST31A
SS HINGES

Customize Design are premium cubicle made to the client's specific requirements.

Dimensions shown below are therefore provided for guidance only.

OVERALL DIMENSIONS

CUBICLE HEIGHT	2000mm
CUBICLE WIDTH	750 - 1000mm
GROUND CLEARANCE	100 - 150mm only

COMPONENT DIMENSIONS

PARTITION HEIGHT	1830mm
PARTITION DEPTH	900 - 1800mm
PARTITION THICKNESS	10, 12, 13, 18mm

PILASTER HEIGHT	1830mm
PILASTER THICKNESS	10, 12, 13, 18mm

DOOR HEIGHT	1830mm
DOOR WIDTH	600mm (One side digital print)

DOOR THICKNESS	10, 12, 13, 18mm
----------------	------------------

ACCESSORIES

NYLON / STAINLESS STEEL

OPTIONS

- Full Height (floor to ceiling cubicle)
- Variable overall height and floor clearance
- Varies of colors selection in one cubicle

*NOTE

Items can be supplied nationally on a supply only or supply and install basis. Installation is carried out by our fully qualified installation team.



Specification

To supply and install Toimanz toilet cubicle "Premium Customize" consists of high pressure laminate phenolic compact board with melamine resin impregnated decorative paper on both sides with customized design, stainless steel/nylon accessories, and all necessary fitting are in accordance with manufacturer's details.

Available thickness: 12mm, 13mm & 18mm

Accessories & Fittings

TS102, TS104, TS109, TST31A

* Dimensions of 1800mm Depth, overall 2000mm height included 150mm floor clearance is recommended for wastage reduction on material.



Junior Design are premium cubicle made to the client's specific requirements

Dimensions shown below are therefore provided for guidance only.

OVERALL DIMENSIONS

CUBICLE HEIGHT	1200mm - 1500mm
CUBICLE WIDTH	900mm
GROUND CLEARANCE	150mm

COMPONENT DIMENSIONS

PARTITION HEIGHT	1200mm
PARTITION THICKNESS	10mm, 12mm, 13mm

DOOR HEIGHT	1200mm
DOOR WIDTH	600mm
DOOR THICKNESS	10mm, 12mm, 13mm

ACCESSORIES

NYLON / STAINLESS STEEL

OPTIONS

- Variable overall height and floor clearance
- Varies of colors selection in one cubicle

***NOTE**

Items can be supplied nationally on a supply only or supply and install basis. Installation is carried out by our fully qualified installation team.



Specification

To supply and install Toimanz Toilet Cubicle System Model "JUNIOR" consist of high pressure laminate phenolic compact board with melamine resin impregnated decorative paper on both sides, stainless steel accessories, stainless steel shoe box on front pilaster panel and heavy duty aluminum (NA) and all necessary fitting are in accordance with manufacturer's details.

Available Thickness: 10mm, 12mm & 13mm

Accessories & Fittings

TN101, TN102, TN103, TN104, TN105 and Top Rail (BK), U-Channel (BK)

* Dimensions of 1800mm Depth, overall 1200mm height included 150mm floor clearance is recommended for wastage reduction on material



TN101

NYLON ADJUSTABLE LEG



TN102

NYLON GRAVITY HINGE



TN103

NYLON DOOR KNOB



TN104

NYLON TUMBLER LOCK INDICATOR



TN105

NYLON COAT HOOK



TOIMANZ LOCKER

LOCKER SPECIFICATION & COMPONENTS IN DETAILS

MATERIAL

COMPACT GRADE LAMINATES

Thickness 3mm, 6mm, 10mm, 12 mm, 18mm

ACCESSORIES

LOCKCOIN LOCK , DIGITAL LOCK, KEYLESS LOCK, PADLOCK LOCK, INDUCTIVE

STANDARD SIZE

300W* 450D* 1800H (MM, Per column, 100mm for the base support)

OTHERS CAN BE CUSTOMIZED

WIDTH	300 to 500 mm
DEPTH	300 to 500 mm
COMBINE	300 to 1200 mm



Specification

Toimanz compact and smart solution locker system use the most durable and environmentally board.

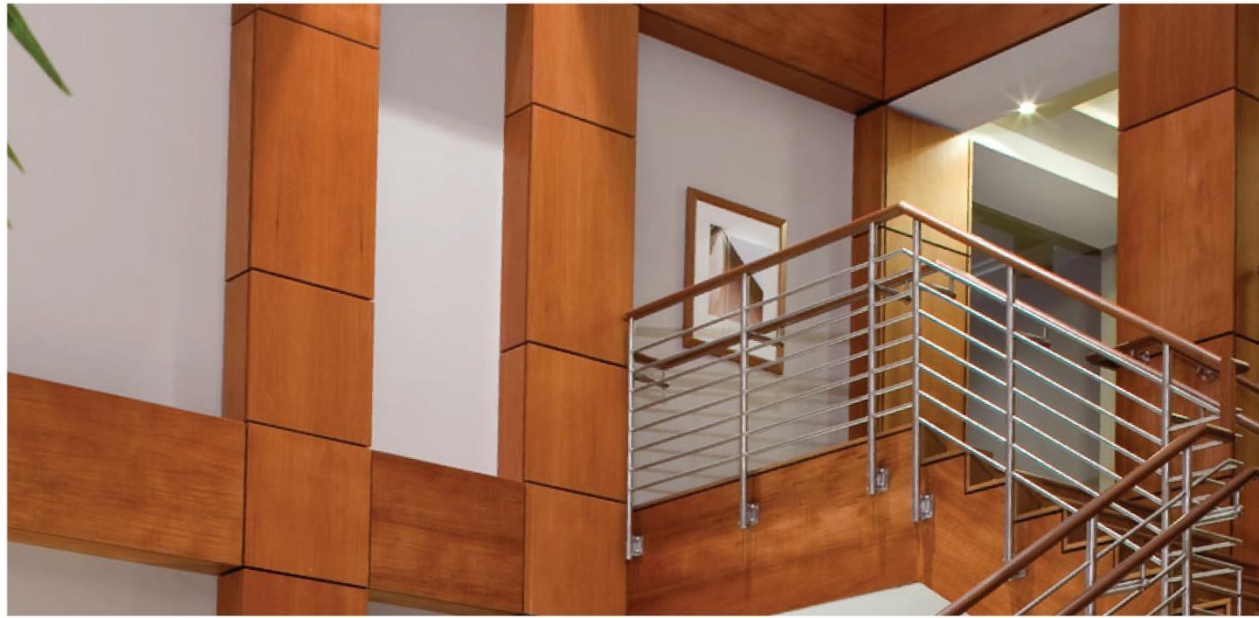
We are able to provide our customer satisfy and guarantee by using our high quality product High Pressure Laminates Compact board. TMZ locker system is suitable for high humidity area such as Gym, swimming pool area and fitness club.

TMZ locker system available in extensive range of solid color, woodgrain and customize design. Toimanz create imagination to reality, all our locker system design can be in customize dimension and graphic to prefer fit your design.

Accessories & Fittings

TZ 400, TZ 401, TZ 402, TZ 403 & TZ 404





PHENOLIC WALL CLADDING

Compact laminate board are decorative panel with unique characteristics (high strength and durability) and are suitable for external and internal wall cladding including rooms subjected to external influences and damp rooms. These compact laminate board is a certified laboratory grade board with anti-bacterial which is ideal for hospital usage as well. Apart from having excellent working characteristic, compact laminate board offered a variety of colours and textures to allow creates a stylish and practical design required.



LABORATORIES

Toimanz laboratories grade compact laminates is designed for horizontal and vertical countertop along with wall panelling for commercial, institutional, school laboratories, hospital, clinic, research and development where chemical resistance is important. Lab grade compact laminates provide a better resistance to acid and alkali, chemical corrosion, cigarette burns and fireproof.

Our lab grade compact laminates are Antibacterial, and non-toxic material which perfectly use in interior.



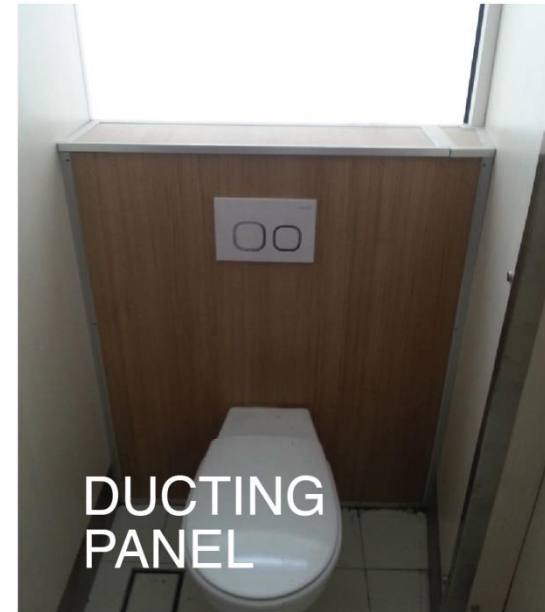
PHENOLIC SEAT



PRIVACY
PANEL



32



DUCTING
PANEL



VANITY
CABINET



VANITY TOP

33

IN HOUSE

ACCESSORIES



TN101

NYLON ADJUSTABLE LEG



TN102

NYLON GRAVITY HINGE



TN103

NYLON DOOR KNOB



TN104

NYLON TUMBTURN LOCK
INDICATOR



TN105

NYLON COAT HOOK



TN106

NYLON LATCH HOOK



TS101

CYLINDER COAT HOOK



TS102

SS WHITE COAT HOOK



TS103

RADIANT TURN LOCK
INDICATOR



TS104

SS INDICATOR LATCH



TS105

SS LATCH LOCK



TS106

DOOR KNOB



TS107

SS TUMBTURN LOCK
INDICATOR



TS108

SS ADJUSTABLE LEG



TS109

SS ROUND ADJUSTABLE LEG



TS110

SS SHOEBOX



TSL11

STAINLESS STEEL L BRACKET



TST33

LOCKER SPRING HINGES



TST34

SS GRAVITY HINGES



TST31A

SS HINGES

ALTER NATIVE

ACCESSORIES



TN107

TWICE NYLON LOCKSET



TN108

NYLON STOPER LOCK
INDICATOR



TN109

NYLON L BRACKET



TN110

NYLON OVAL
ADJUSTABLE LEG



TN111

NYLON SQUARE
ADJUSTABLE LEG



TS111

STRAIGHT LOCK INDICATOR



TS112

SIGNAL TURN LOCK



TS113

SS TURN LOCK INDICATOR



TS114

SS BOLT TUMBTURN
LOCKSET



TS115

LATCH TURN



TS118

DOT DOOR KNOB



TS201

SS CONIC ADJUSTABLE LEG



TST32

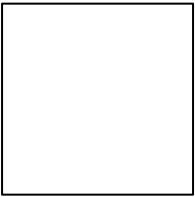
BUTTERFLY HINGES



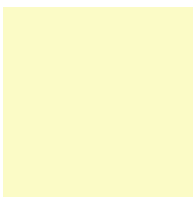
TST33

MOCA HINGES

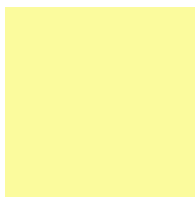
TMZ COLOR CHART



TMZ 6530 S



TMZ 8801S



TMZ 1408S



TMZ 9308S



TMZ 3198S



TMZ 620S



TMZ 8006S



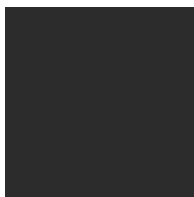
TMZ 8927S



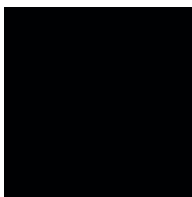
TMZ 8004S



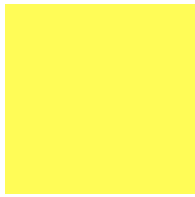
TMZ 8064S



TMZ 279 S



TMZ 2333S



TMZ 9230S



TMZ 3408S



TMZ 8820S



TMZ 1608S



TMZ 5308S



TMZ 0820S



TMZ 5230S



TMZ 6162S



TMZ 4210S



TMZ 3910E



TMZ 0320S



TMZ 0320S



TMZ 6230S



TMZ 0806S



TMZ 464S



TMZ 7820S



TMZ 8147S



TMZ 430S



TMZ 3910S



TMZ 530S



TMZ 2010S



TMZ 8052S



TMZ 8011S



TMZ 320S



TMZ 682W



TMZ 8384W



TMZ 8380W



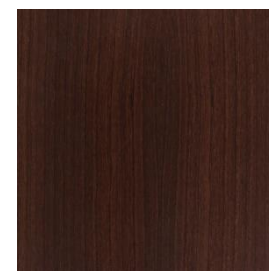
TMZ 8421W



TMZ 8453W



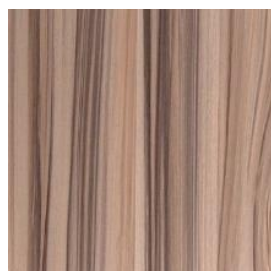
TMZ 8184W



TMZ 8342W



TMZ 5018W



TMZ 7838W



TMZ 8374W



TMZ 5338W



TMZ 5061W



TMZ 8199W



TMZ 8212W



TMZ 8331W



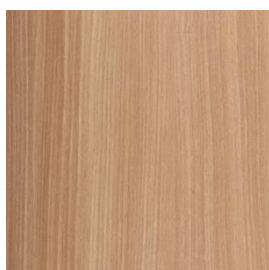
TMZ 8344W



TMZ 22338W



TMZ 5003W



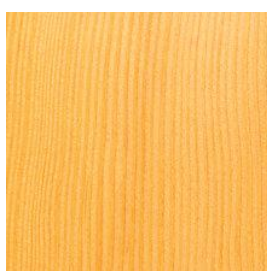
TMZ 8411W



TMZ 8361W



TMZ 770W



TMZ 8329W



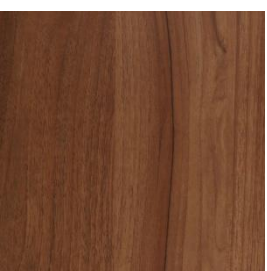
TMZ 2818W



TMZ 8425W



TMZ 8428W



TMZ 8410W



TMZ 8405W



TMZ 8448W

Understanding your needs & provide your satisfaction is our priorities.

“SUIT ALL YOUR
SPECIFIC NEEDS”

toimanz TOIMANZ

Toimanz Sdn Bhd

No. 21 & 23, Jalan Balakong Jaya 1, Taman Industrial Balakong Jaya,
43300 Balakong, Selangor D.E Malaysia

export@toimanz.com.my | enquiry@toimanz.com.my

Tel: +603 8964 1335

Fax: +603 8964 1631

HP/WhatsApp: +6017 288 0100

www.toimanz.com.my



YAN

019 338 9171

017 288 9407

yanyan@toimanz.com.my

obrigado
Dankie Gracias شكراً
Спасибо Merci Takk
Köszönjük Terima Kasih
Grazie Dziękujemy Dëkojame
Ďekujeme Vielen Dank Paldies
Kiitos Täname teid 谢谢
Thank You Tak
感谢您 Obrigado Teşekkür Ederiz
Go Raibh Maith Agat 고맙습니다
Bedankt Дëкуjeme vám
ありがとうございました
Tack